



LEAVING CANADA

THE MENNONITE
MIGRATION TO MEXICO

CONTENTS

Table of

01	Description
02	Themes
03	Components
04-08	Layouts
09	Details
10	Partners
11	Contact



Exhibit

DESCRIPTION



Mennonite Heritage Archives, CA MHC 526-29-3.0

"Leaving Canada" explores the history of an ethnoreligious community's determination to preserve its faith and culture.

On March 1, 1922, a large group of Old Colony Mennonites gathered at the railway station in Plum Coulee, Manitoba, awaiting a train that would take them to Cuauhtémoc, a small town in northern Mexico. "Leaving Canada" tells the story of these Mennonites and the nearly eight thousand others who left Canada in the 1920s to start new lives in Mexico and Paraguay.

"Leaving Canada" explores the history of an ethnoreligious community's

determination to preserve its autonomy. It is a story about competing conceptions of religious freedom and of tensions between religious, linguistic, and educational rights on the one hand, and the obligations of citizenship on the other.

Featuring artefacts from Mennonite Heritage Village's collection, historical photographs from public archives and private collections, and original interpretative content, "Leaving Canada" draws on the most current

research on the 1920s emigration from Canada. It is crafted to the highest standards in research, content, interpretation, photography, and exhibit design. This travelling exhibit is based on a larger exhibit that was on display at Mennonite Heritage Village in 2022.

The exhibit is a collaboration of Mennonite Heritage Village, the Plett Foundation, and the Mennonite Historical Society of Canada.

THEMES

Exhibit

"Leaving Canada" follows the migration of Mennonites to Mexico through three main themes:

Parting Ways

Explores the historical events and social contexts that led to this emigration from Canada, including Mennonite resistance to the changes in public schools legislation in Manitoba and Saskatchewan in 1916 and 1917

New Beginning

Highlights the economic, environmental, and cultural challenges of settlement in Mexico and the adaptation of traditional forms of Mennonite community life to this new setting

Lasting Legacy

Examines the transformation of Mennonite group identity in western Canada, the dispersion of Mennonites throughout Latin America, and the return migration of these "Kanadier" Mennonites to Canada, which continues today



Mennonite Heritage Archives, CA MHC 031-2.0

COMPONENTS

Exhibit

The "Leaving Canada" travelling exhibit is comprised of three types of exhibit components, creating an easy-to-install, engaging exhibit flexible enough to fit a wide variety of spaces.

Display Crates

30" l x 30" w x 40" h

Four free-standing Display Crates are the main focal point of the exhibit. Each crate features removable graphic panels on all sides and comes with a pre-installed historical artefact displayed on the top. Display Crates are equipped with castors to make installation easy with one to two people. Display Crates double as shipping containers in which all components of the crate are stored inside during transit for simple set-up.

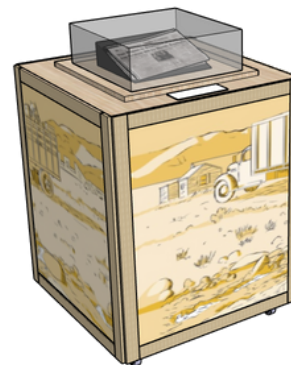


Exhibit Panels

39" w x 75" h

Four free-standing, pop-up style interpretive panels provide the main content for the exhibit. Each panel accompanies one Display Crate and features original content and historical photos from Mennonite archives and private collections.



Wall Panels

24" w x 48" h

Four optional wall panels provide additional historical content for host locations with wall space available. While the Wall Panels are helpful in providing additional context for the exhibit's themes, they are optional and not central to a visitor's understanding of the topic. Wall Panels come with pre-installed spacers on the back and batons are supplied for an easy, professional install.

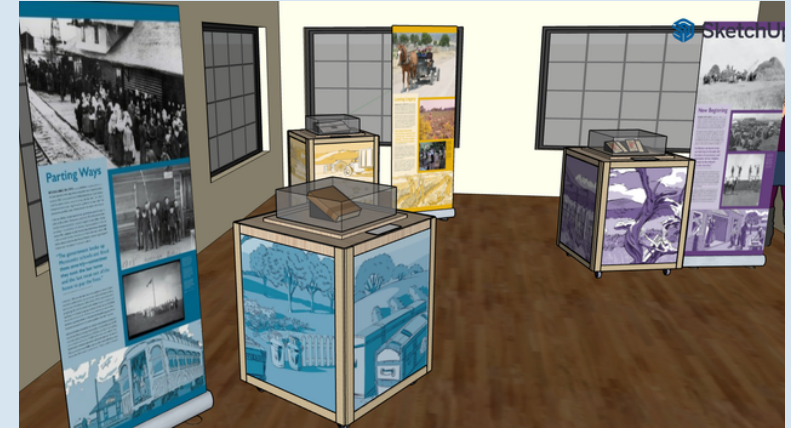


Exhibit LAYOUTS

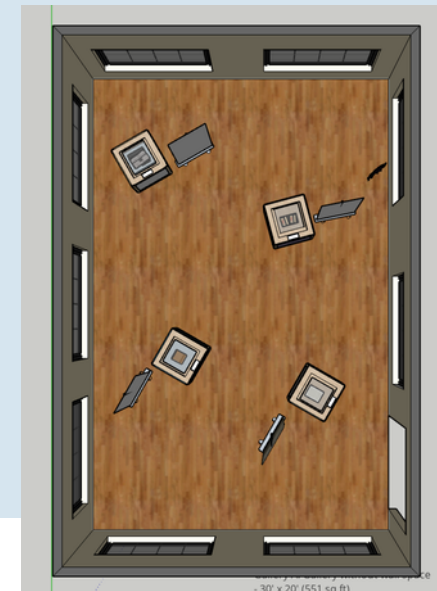
Explore sample layouts to find the best fit for your space

Gallery A

Gallery A is a large, 30' x 20' (551 sq ft) area but has no wall space available. It features the Display Crates and Exhibit Panels only.



Inside Gallery A



Top view

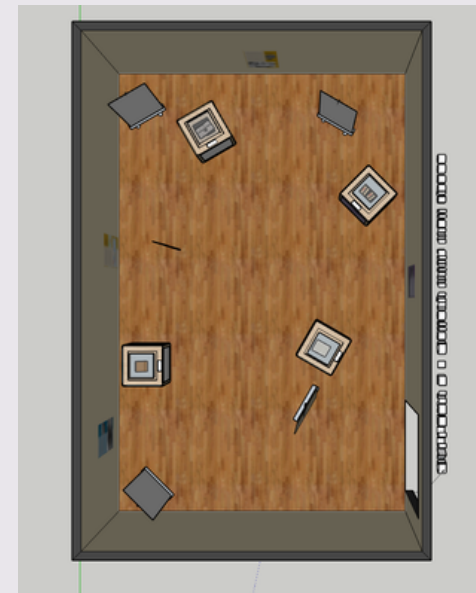
Exhibit LAYOUTS

Gallery B

Gallery B is a large, 30' x 20' (551 sq ft) area that has wall space available. It features the Display Crates, Exhibit Panels, and optional Wall Panels.



Inside Gallery B



Top view

Exhibit LAYOUTS

Gallery C

Gallery C is a long, narrow space similar to a hallway setting. It measures 9' x 39' (351 sq ft), with wall space available. It features the Display Crates, Exhibit Panels, and optional Wall Panels.



Top view

Inside Gallery C

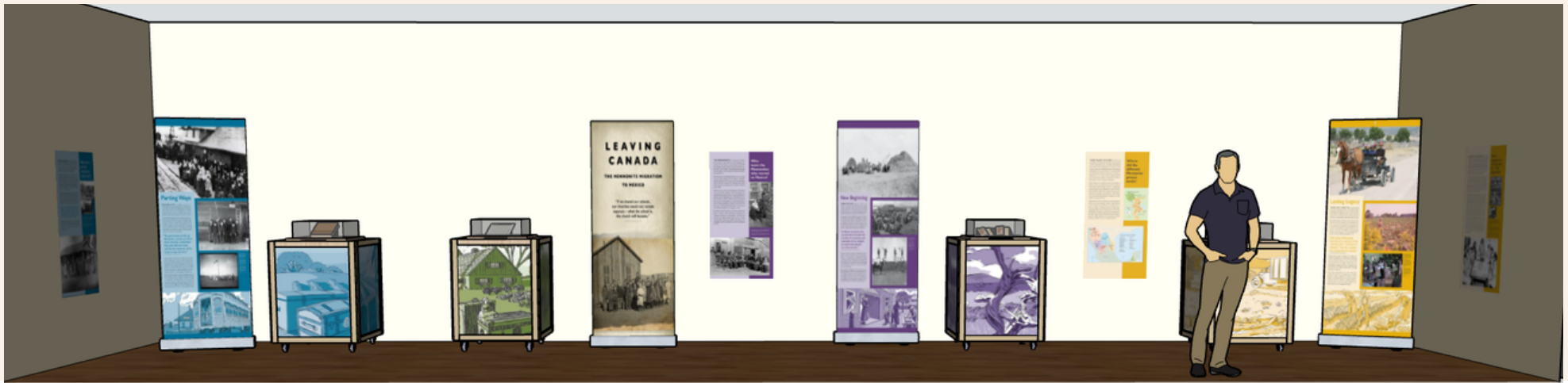
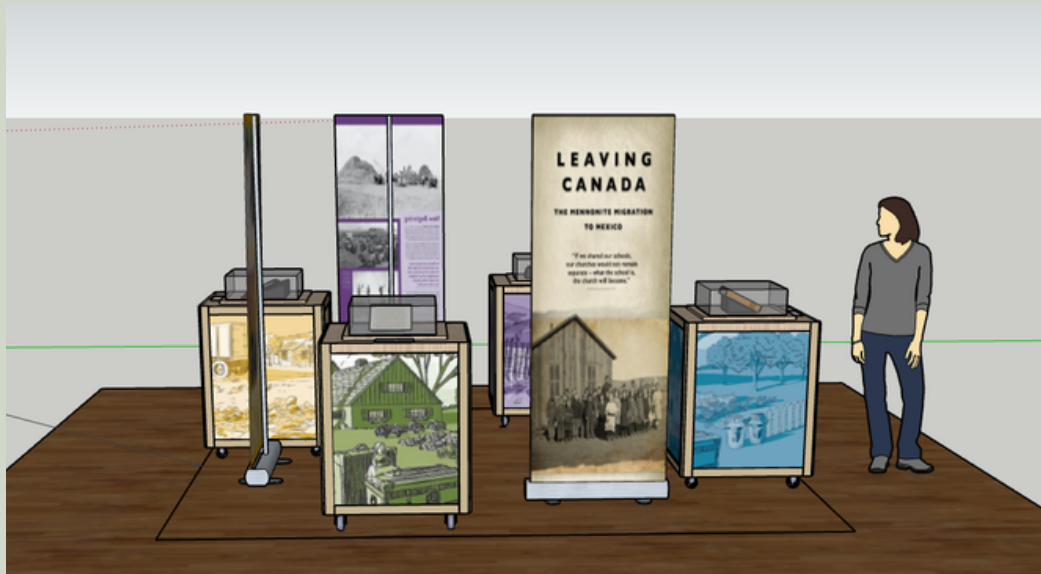
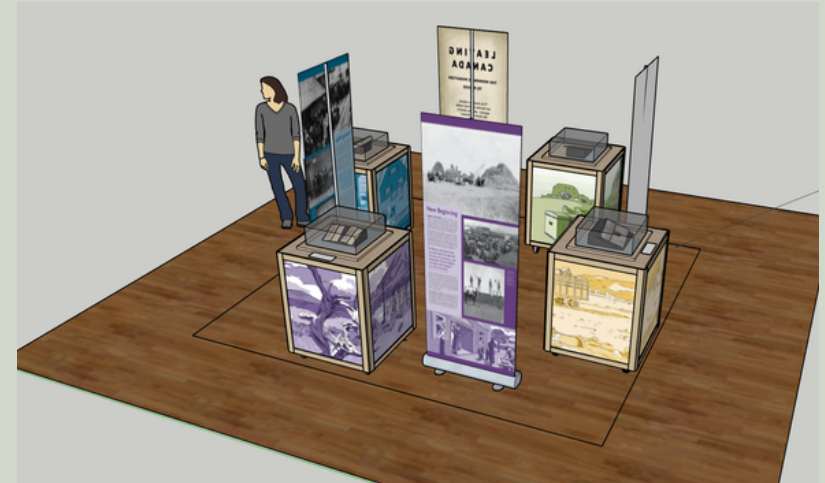


Exhibit LAYOUTS

Gallery D

Gallery D is an open space similar to a foyer, with minimal floor space and no wall space available. The exhibit is displayed in a 12' x 12' (144 sq ft) square, featuring the Display Crates and Exhibit Panels only.

Inside Gallery C



Top view

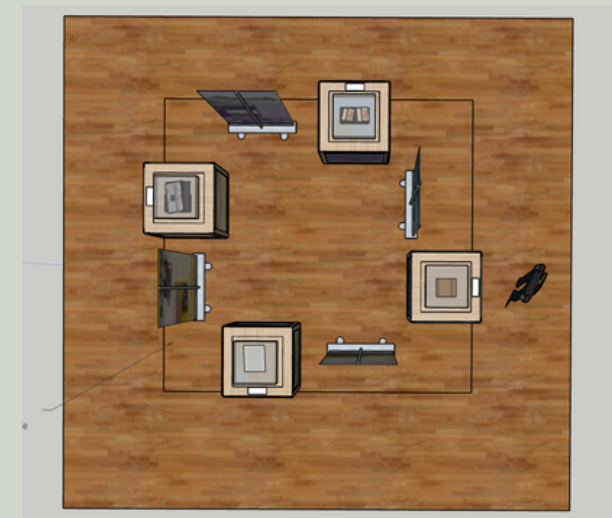
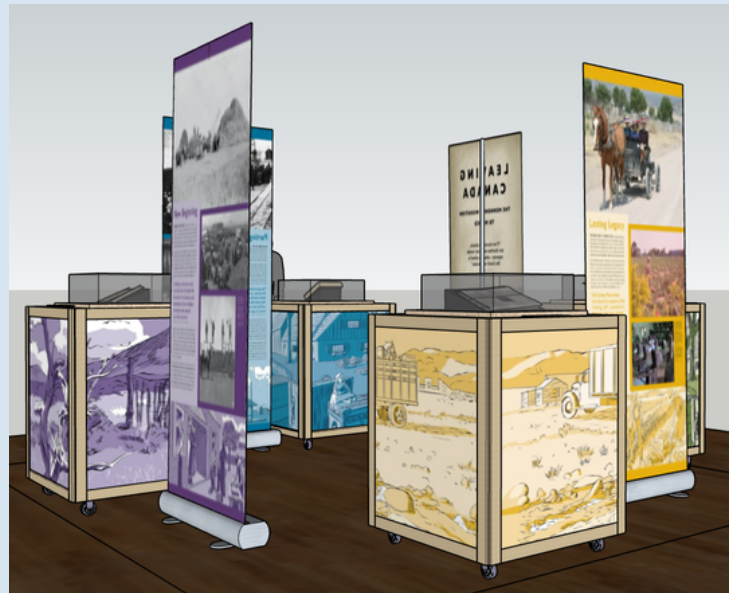


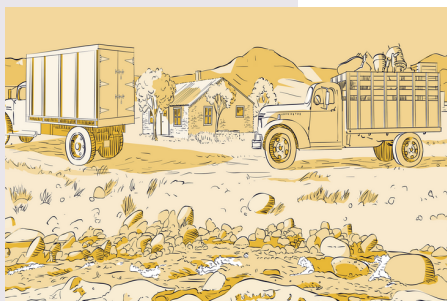
Exhibit LAYOUTS

Need help imagining "Leaving Canada" in your space? Visit our website to view our interactive online gallery to explore sample layouts in more detail!

<https://mhsc.ca/leaving-canada/>



Hosting DETAILS



1 Costs

\$250 for small, un-incorporated, or volunteer-run organizations (i.e., smaller museums, historical societies, local archives, or similar organizations run by volunteers)

\$750 for medium-to-large, incorporated organizations run by paid staff (i.e., larger museums, archives, libraries, or similar organizations)

In addition to the hosting fee, the hosting organization is responsible for onward shipping costs and providing proof of insurance for the exhibit for the duration of its display.

2 Promotion

Exhibit hosts will receive a social media package to help promote "Leaving Canada" including graphics sized to suit Facebook, Instagram, Twitter, and MailChimp applications.

3 Programming

The Plett Foundation and Mennonite Historical Society of Canada can assist hosts in coordinating programming to coincide with displaying "Leaving Canada," including:

- Public screenings of "Conform: The Mennonite Migration to Mexico," a 2022 documentary produced by Refuge 31 Films in partnership with the Plett Foundation
- Public lectures on the topic and themes of "Leaving Canada"

All expenses related to programming are the responsibility of each host location.



Mennonite Heritage Village

Exhibit Development

Mennonite Heritage Village is a history museum in Steinbach, Manitoba. Its mission is to preserve and interpret the history of the Russian-descendant Mennonites in Canada through the 17,000+ artefacts in its collection and through developing original exhibits.

Mennonite Historical Society of Canada

Content Advisory, Travel Logistics

The Mennonite Historical Society of Canada works with Mennonite denominations, post-secondary institutions, provincial Mennonite historical societies, archives, museums, and libraries to preserve, promote, and interpret the history of Mennonites in Canada.

Plett Foundation

Content Advisory, Major Funder

The Plett Foundation is a not-for-profit private charity that supports historical projects related to the background, migration and settlement, and descendant communities of the Mennonites who came to Manitoba from imperial Russia in the 1870s.



Financial support of this project provided by the Plett Foundation, Mennonite Heritage Village, the Mennonite Historical Society of Canada, and the Manitoba Heritage Grants Program



LEAVING CANADA

THE MENNONITE
MIGRATION TO
MEXICO

TRAVELLING EXHIBIT AVAILABLE
SPRING 2023

Contact us for bookings or for more information

Exhibit Bookings:

Jeremy Wiebe (Treasurer, MHSC)

treasurer@mhsc.ca

204-558-9432

Exhibit Content:

Andrea Klassen (Senior Curator, MHV)

andreak@mhv.ca

204-326-9661, ext 226